

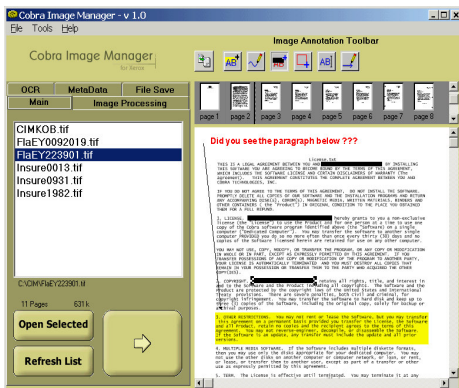


# cobra image manager

for Xerox

**DRAFT**

## Document Imaging Workstation for Xerox Document Centre and WorkCentre Pro



View - Annotate - Reorder - Delete

**Cobra Image Manager (CIM)** offers a valuable addition to your Xerox multifunction scanning environment. With the simple touch screen interface connected directly to your Xerox scanning device, CIM is a true business imaging workstation for all applications.

CIM provides a simple interface enabling scanned documents to be reviewed, improved, and saved into your organizations business workflow. CIM takes advantage of the powerful scanning abilities of Xerox multifunction devices, and enables workflow and image manipulation your business demands.

What's on your scanned document wishlist? With CIM, users can verify image integrity with easy access to number of pages and file size; users can also easily reorder, rotate, or delete pages. Use the CIM touchscreen to annotate your file with post-it and text notes!



WorkCentre Pro 65

### CIM Business Workflow Applications

- Invoices/Purchase Orders
- Engineering Documents
- Legal Case File Management
- Manufacturing Records/Logs
- Contract Management
- Financial Sector

### Cobra Image Manager for Xerox

- View scanned image directly at device
- Edit image file: Reorder - Delete - Rotate
- Simple entry of customized metadata
- Barcode recognition and profile integration
- Save to File System or Xerox DocuShare

**DRAFT**



## Cobra Image Manager Features

Easy profiling of documents with Xerox integrated metadata

Image Enhancement - despeckle, deskew, hole punch/blank page removal and more

Optional OCR module produces full text searchable PDF or RTF files



Document Centre 555

## CIM System Requirements

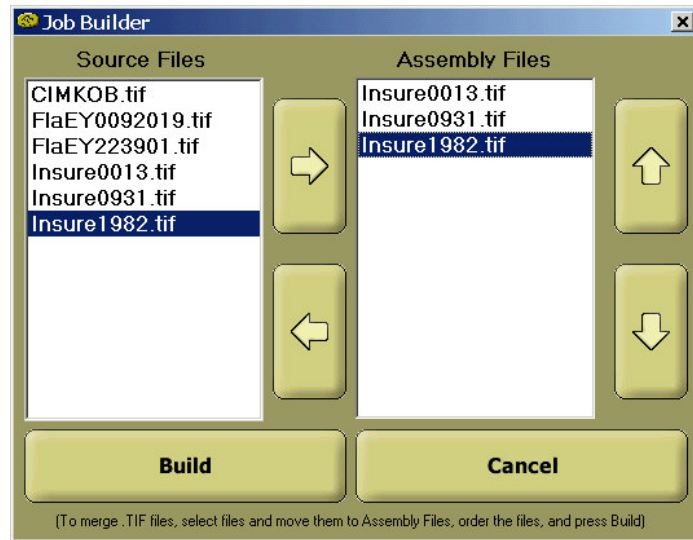
- Microsoft Windows 2000
- 500 MHz or faster CPU
- Minimum 256 MB RAM
- TCP/IP Network with FTP
- Xerox Document Centre or WorkCentre Pro

**DRAFT**

## Imaging Workflow for Your Business

CIM and Xerox multifunction scanning devices offer a viable scanning solution for all sizes. Easy to use. Easy to understand. Easy to try. Download a trial version of CIM at [www.cobratech.com](http://www.cobratech.com) and see the power for yourself at no cost!

CIM is easily installed for use on any network connected, scan enabled Xerox multifunction device.



Job Assembly - Merge TIFF File Output

**Cobra Technologies** is an IBM Premier Business Partner specializing in Lotus solutions. Dedicated to imaging and document management solutions, Cobra's imaging consulting expertise is complemented by its software solution products, including Cobra Image Router and the DocTools Suite. Other areas of expertise include custom applications for Lotus Domino and Notes, Workflow and Cobra Bots for Lotus Sametime.



**cobra**  
technologies

THE DOCUMENT COMPANY  
**XEROX**



**DRAFT**

Cobra Technologies, Inc.  
2930 Wellington Circle  
Suite 201  
Tallahassee, Florida 32309

Phone 850-553-9393  
Fax 850-422-1535  
[sales@cobratech.com](mailto:sales@cobratech.com)  
<http://www.cobratech.com>

For information on becoming a Cobra Authorized Reseller, contact [sales@cobratech.com](mailto:sales@cobratech.com)